



# IZI-Touch Manual



## Table of Contents

General.....	3
Version information .....	3
Connection .....	4
Settings.....	4
Local .....	5
Linked IZI-Access .....	5
Search IZI-Access .....	5
Settings.....	6
Network .....	6
Screen.....	6
System info.....	6
IZI-Supervisor Integration .....	7
USB .....	7
Firmware upgrade .....	8
Network .....	8
Firmware upgrade .....	8

## General

The IZI-Touch is a sleek touchscreen device that connects to an IZI-AccessPro over the network. Using the IZI-Supervisor, you can design your own custom interface with buttons, faders, images, and labels—tailored exactly to your installation. Functions can even be protected with a PIN code for secure operation.

One of its greatest strengths appears when multiple IZI-Touch units are linked to the same IZI-AccessPro: every button and fader stays perfectly synchronized across all devices. The screen layout and configuration are automatically downloaded from the IZI-AccessPro, keeping everything consistent and easy to manage.

Whether in theaters, hotels, cinemas, or large multi-zone venues, the IZI-Touch offers effortless, elegant lighting control wherever you need it.



## Version information

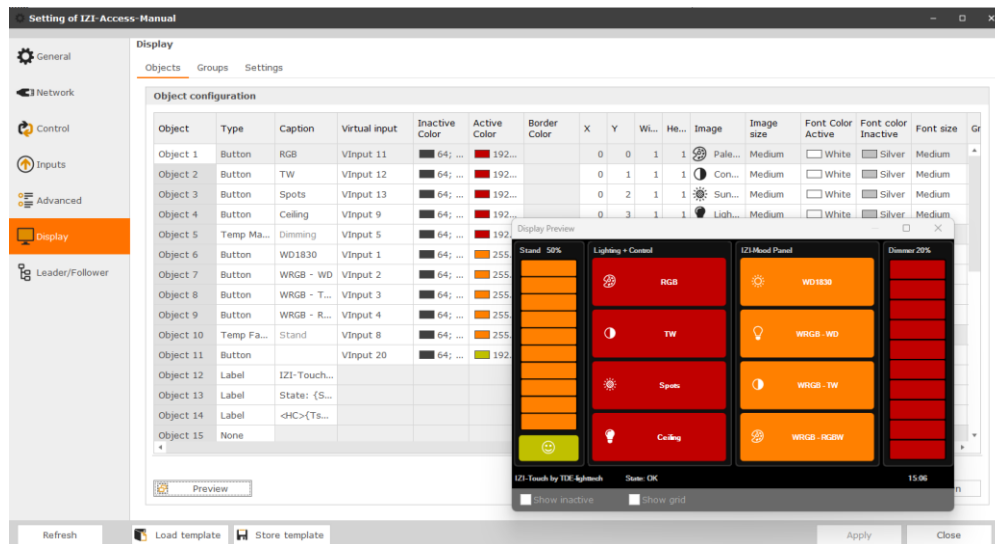
This document describes the initial release of the IZI-Touch system. Always make sure you are using the latest firmware and documentation for the best performance and newest features.

Version	Author	Date	Firmware	Changes
1.0	MZ	8-1-2026		Initial document

## Connection

The IZI-Touch is designed to work seamlessly with the IZI-AccessPro and cannot operate on its own. Each IZI-AccessPro can support up to **four IZI-Touch units**, all of which are automatically kept perfectly in sync.

All screen layouts, buttons, and functionality are created within the IZI-AccessPro using the **IZI-Supervisor** software. Once configured, the content is distributed automatically to every connected IZI-Touch, ensuring a uniform and professional user experience. For details on creating layouts and objects, please refer to the IZI-Supervisor manual.



## Settings

Settings of the IZI-Touch itself can be made locally or via the IZI-Supervisor.

Setting	USB	Ethernet	Local
IZI-Access connection			Y
Device name and description	Y	Y	Y
Configuration index selection	Y	Y	Y
Screen brightness, sleep behavior, and rotation	Y	Y	Y
Network configuration (DHCP or static IP)	Y	Y	Y
Image management	Y		
Firmware updates	Y		

## Local

Local settings can be accessed directly on the IZI-Touch:

1. Swipe **from left to right**, starting just outside the left edge of the screen.
2. The side menu will appear.
3. Tap **Settings** to open the configuration menu.

This intuitive gesture ensures settings are always within reach, while remaining hidden during normal operation.

### Linked IZI-Access

This section defines how the IZI-Touch connects to an IZI-AccessPro.

#### *Name*

Displays the name of the connected IZI-AccessPro. This can be entered manually, but using **Search IZI-Access** is strongly recommended.

#### *IP address*

Shows the IP address of the connected IZI-AccessPro. Manual entry is possible, though automatic discovery is preferred.

#### *Password*

The password required to access the IZI-AccessPro. By default, this is set to **p@\$\$word**.

#### *Serial*

Displays the serial number of the connected IZI-AccessPro. This field is read-only.

#### *Connect*

Use this button to test the connection with the current settings. A confirmation message will appear when the connection is successful, after which the main screen loads automatically.

### Search IZI-Access

This function scans the network for available IZI-AccessPro modules. When you select a device from the list, all connection fields (in the linked IZI-Access section) are filled in automatically.

If no devices appear, or if an IZI-AccessPro was connected after opening the menu, simply tap **Search IZI-Access** again to refresh the list.

Once selected, press **Connect** to finalize and test the connection.

## Settings

### *Config index*

Select a configuration index from **1 to 4**. In the IZI-Supervisor, objects can be assigned to one or multiple indexes, allowing different layouts per device or usage scenario.

### *Name*

The device name as shown in the IZI-Supervisor when connected via USB or Ethernet.

### *Description*

Optional notes or a short description to help identify the device within larger installations.

### *Sleep action*

Defines what happens when the device enters sleep mode. Choose between completely turning off the backlight or gently dimming the display.

### *High level/Wake Brightness*

Sets the brightness level used immediately after the screen is touched.

## Network

### *DHCP*

Enable DHCP to automatically receive an IP address from the network.

### *IP Address, Subnet Mask, Gateway*

When using a static IP configuration, these values can be entered manually. For best results, set the gateway to the IP address of the connected IZI-AccessPro.

### *Apply*

Always press **Apply** to activate new network settings.

## Screen

Scroll down to see this setting at the bottom of the screen.

### *Rotation*

Adjust the screen orientation to match the physical installation of the device.

## System info

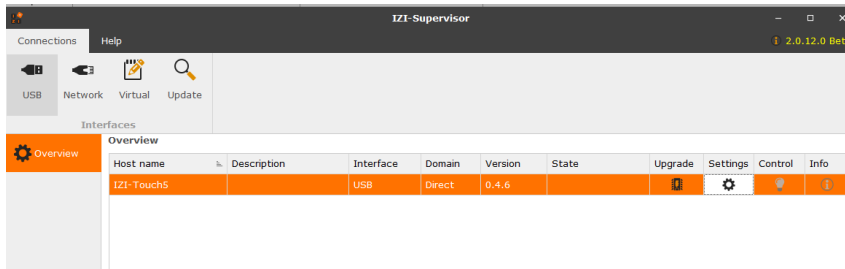
Scroll down to see this setting at the bottom of the screen.

### *Version*

Here you can view the installed firmware version of the IZI-Touch, which is useful for maintenance and support.

## IZI-Supervisor Integration

When connected via **USB-C or Ethernet**, the IZI-Supervisor automatically detects available IZI-Touch devices. From here, you can manage general settings, network configuration, images, and firmware updates with ease.



## USB

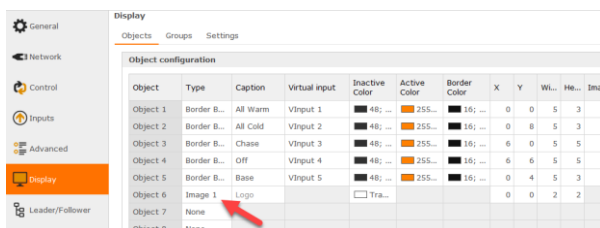
The explanation of the general and Network settings can be found in the previous paragraph. If settings are changed, press apply to activate.



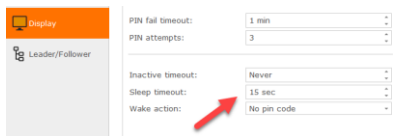
## Images

Images enhance the visual appearance of your interface and are used within object definitions in the IZI-AccessPro.

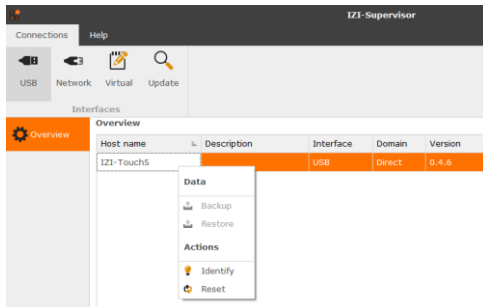
- Images can only be uploaded via **USB**
- Images are stored **per IZI-Touch**, allowing customization per device
- Up to **four images** can be assigned to objects



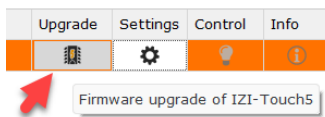
An additional image can be configured as a **screensaver**, which appears when the sleep timeout in the IZI-AccessPro is set to a value greater than zero.



The **Identify** image is shown when the device is identified from within the IZI-Supervisor, making it easy to locate the correct unit during installation.



## Firmware upgrade



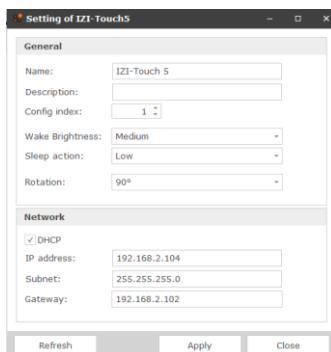
Firmware updates are currently supported **via USB-C only**. To update the IZI-Touch, a firmware file with the extension **.ipk** is required.

**Important:** Do not perform firmware updates over the network.

If prompted for a password while accessing settings, use the default password: **p@\$sword**.

## Network

The general and Network settings can be found in the previous paragraph. If settings are changed, press apply to activate.



If a password is requested to enter the settings, use 'p@\$sword'.

## Firmware upgrade

Do not use the update via network.