



IZI-Manager manual

Version 1.7.x

Index

I. Welcome.....	3
II. IZI-Manager Installation	4
III. Connection	5
IV. Commissioning	7
Smart discover.....	7
Recover.....	8
Phased.....	8
IV.I Field descriptions	9
IV.II System configuration update	10
IV.III System configuration storage	10
V. Update.....	11
VI. Configuration.....	12
VII. Monitor	13
VIII. DMX control	14
IX. Troubleshooting	15



I. Welcome

The IZI-Link manager is the software tool for commissioning, configuration and testing IZI-Link LED fixtures, drivers and interfaces.

This manual will provide you with the information that is needed to connect and commission IZI-Link products.

If, after consulting this manual, you still have questions please contact us on info@tde-lighttech.nl.

II. IZI-Manager Installation

The IZI-Link manager software is developed for windows only. To install the IZI-Link manager software simply execute the setup file and follow the setup instructions.

The installer might request to allow the installation of a 'NXP driver'. This driver is meant for a ('new') module called the IZI-Access.

The installation manager will show you when the installation has been successful.

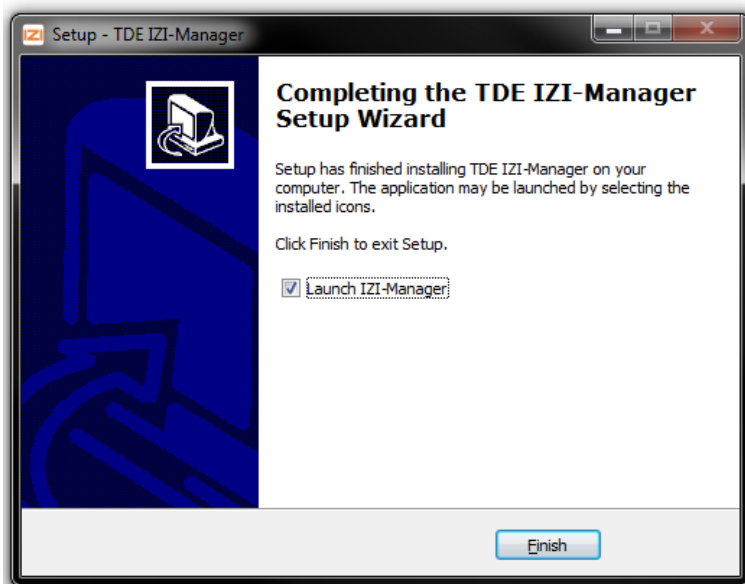


Figure 1 - Successful installation

III. Connection

In order to the IZI-Link manager to commission IZI-Link products, all products need to be powered and connected to an IZI-Link USB programmer interface, DMX interface, DMX splitter or directly on the DMX input of a fixture.

The IZI-Link manager and IZI-Link network are connected through the USB to IZI-Link programmer cable or USB programmer interface and requires the installation of its drivers. Installation of the USB drivers is done automatically, the first time the cable is connected to the PC.

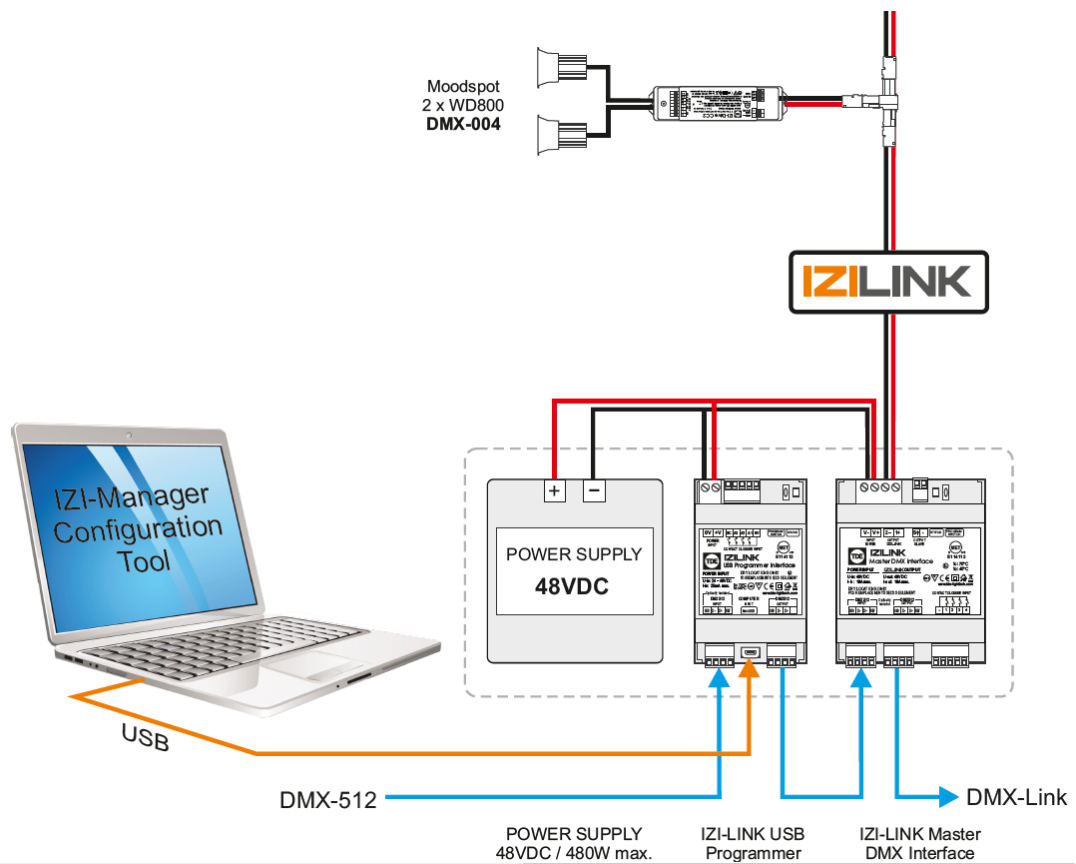


Figure 2 - IZI-Link System

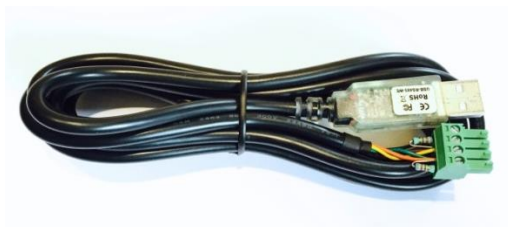


Figure 3 - IZI-Link Programmer cable

The USB to IZI-Link programmer cable needs to be connected to a computer and the DMX512 input of either the IZI-Link Master DMX interface, Splitter or directly on the fixture. When multiple IZI-Link products are connected together make sure to connect to the first IZI-link driver.

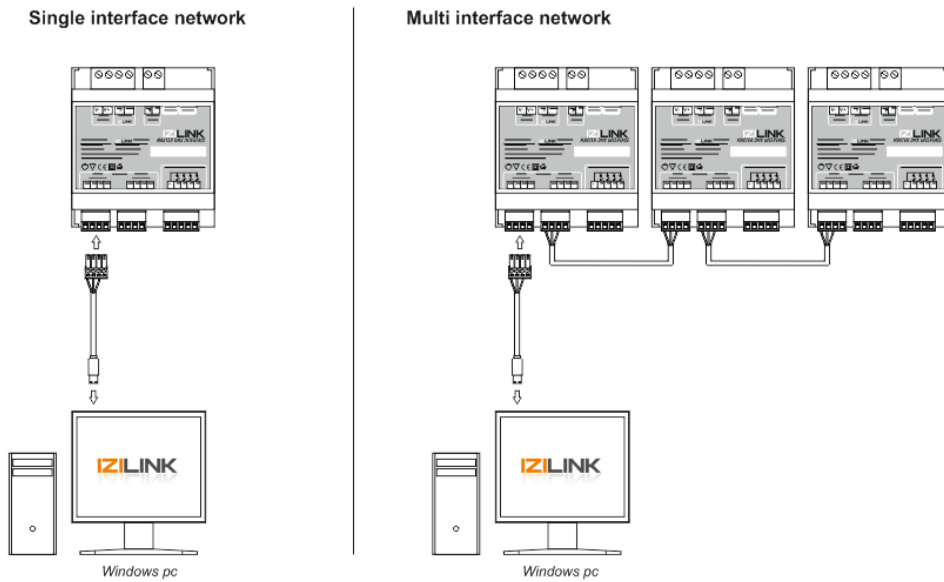


Figure 4 - IZI-Link PC connection to DMX interface

IV. Commissioning

Start up the IZI-Link Manager and connect the USB to IZI-Link programmer cable as specified in chapter 2 Connection. In order for the IZI-manager to discover, all the IZI-Link products need to be powered.

Each product has their own user modes, to find an overview of all the available user modes and configurations please refer to each products manual.

► Select the COM port with (USB) next to it: (e.g. COM3 (USB)) and open the connection by clicking the “Open” button

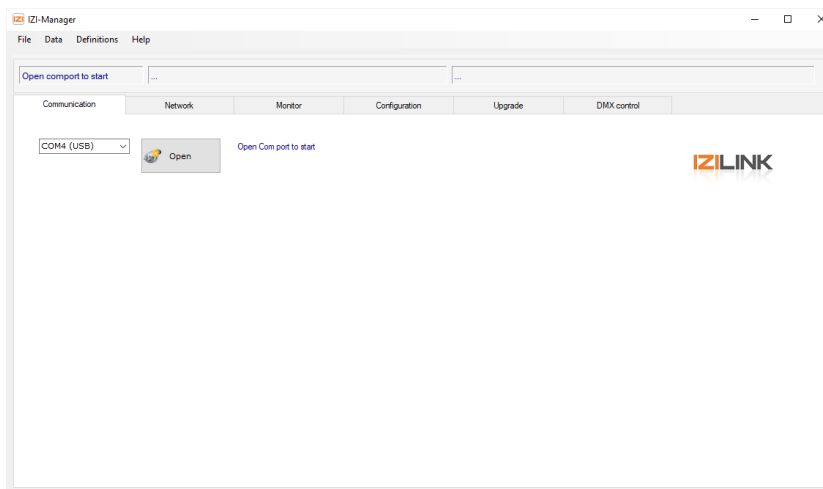


Figure 5 – Com port configuration

When successfully opened, the IZI-Manager will jump to “Network” tab. In this view the connected IZI-Link products can be discovered. The IZI-Manager will show a grouped list of all the connected devices.

To start discovering Click on the Discover button to start searching for IZI-Link products. There are three options to choose from to discover the system. In most cases the ‘Smart’ option is the option to use.

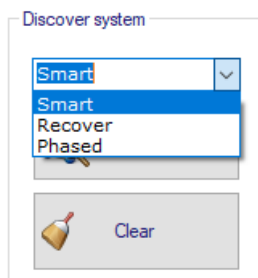


Figure 6 – Discover options

The next paragraphs will explain the modes in more detail.

Smart discover

The ‘Smart’ discover option is the most used option, it will discover a whole system from scratch or update a already discovered system. The name ‘Smart’ is referring to the method it used when a discover is performed

multiple times. It tries to skip retrieving all data that is already discovered in a previous discover to make discovering faster.

Recover

The 'Recover' discover is only relevant when the system contains one or more 'DMX Interfaces'. DMX interfaces contain a copy of the configuration of all modules which are connected to its IZI-Link output. The 'Recover' discover will use the information of the DMX interfaces. So even if a (for example) Moodspot is temporary disconnected from the interface, it will be displayed (offline). This may come in hand when a Moodspot (or other type) is replaced and the configuration must be copied. The old module that is replaced can be removed from the system afterwards by using the right mouse menu.

Phased

When discovering large systems it can take a long time to discover the complete system multiple times. The 'Phased' discover is made to discover the system in phases. The 'Phased' discover will skip to search for modules on the IZI-Link output of all 'DMX-interfaces'. The DMX interfaces will be marked with a warning sign to indicate that the modules on its IZI-link output must be discovered manually.

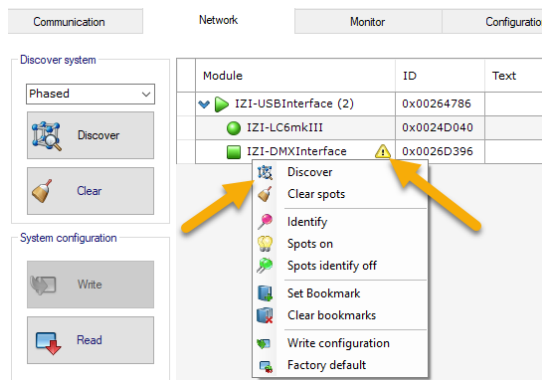


Figure 7 – Phased discover

To start the discover on a DMX Interface manually, right click the DMX interface and click the Discover menu item. When clicked a discover will start only searching for modules on the IZI-link output of the DMX interface.

When the discover is ready a complete overview of the system should be available.

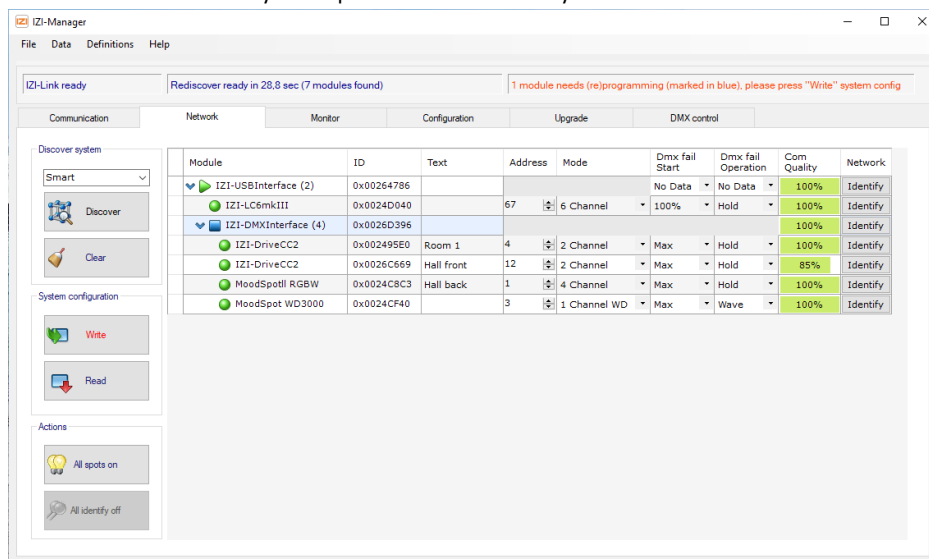


Figure 8 – Network overview

To give a clear overview of the entire installation, the IZI-manager groups together fixtures, drivers and splitters. The fixtures behind each driver/splitter will be shown as a group together. Each product will have its own settings that can be monitored and configured. Not all the settings are applicable for devices, these will be greyed out when not in use.

When all the settings are adjusted as wanted, the settings can be saved onto the modules by pressing the “Write” button. The IZI-Manager will send the adjusted configurations to the modules. The indication of each module will turn green when programmed.








IV.I Field descriptions

Module

This will tell the type of module that is found, such as a LED spot or LED driver.

State

The colour of the icon in the first column tells the current state of the module.

-  Configuration and software up-to-date.
-  Configuration is not up-to-date and must still be written to the module
-  Module is running in the bootloader state (refer to chapter 5 for uploading new software)
-  Module is offline
-  Module is identifying
-  Fixture is set manually to 100% (with Spot on)
-  The module initial setting were not read, until read, writing will not be possible.

ID

Each Module has its own unique identification number, this is hardware configured and cannot be changed.

Address

Each fixture can be addressed for individual control. The addressing is based on the DMX512 control. Any address from 1-512 can be given to the fixture. For individual control of each fixture, each fixture needs to have their own address. For grouped control give the fixtures that need to be grouped together the same address.

Text

The text field can be used for additional info. E.g. adding the location of the fixture into the field. The field can take text up to 16 characters.

Mode

This is only applicable for fixtures, this determines the mode of operation. Please refer to the product manual for available modes.

DMX Fail Start

When no DMX data is present on power up the following modes of operation can be selected:

- Off - Light is off
- Max - Light will be full on
- Wave - Colour fading on the available channels

The modes can differ per module type.

DMX Fail operation

During operation when DMX data is lost, the fixtures will go into DMX Fail mode. The following modes of operation can be selected:

- Off - Light goes off
 - Hold - Holds the last present DMX value
 - Max - Light goes full on
 - Waves - Colour fading on the available channels
- The modes can differ per module type.*

Com quality

The Com quality indicates the communication quality to the module from 0 to 100%.

Identify

The Identify buttons activates the identify functionality of the module, when activated the module will identify itself by flashing its LED. The identify will stay active until the button is pressed again. The button is also found on other tabs.

IV.II System configuration update

In the Network tab the system settings like address and mode can be changed. When a setting of module is changed the icon at the start of the line will be coloured blue. Blue indicates a change was made and the module itself if not up-to-date.

If the network settings of a fixture is changed and the fixture is connected to a 'DMX-interface', the 'DMX-interface' will also be coloured Blue and is also not up-to-date any more. This is because the 'DMX-interface' holds a copy of the network settings of all fixtures connected to its output.

To update the settings and write it into the modules (marked blue), the 'Write' button must be pressed. The 'Write' will update all modules marked in Blue. After a successful write all modules should be shown with a 'Green' icon, meaning all is up-to-date'.

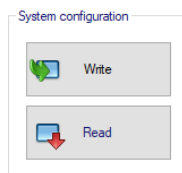
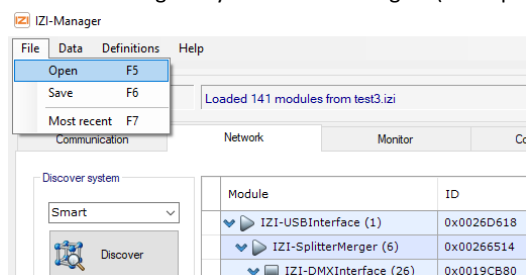


Figure 9 – Update system configuration

It is also possible to read the current system settings from all modules by pressing 'Read'. This can also be used as a 'Undo' function when settings made are not wanted any more.

IV.III System configuration storage

It is possible to store the system configuration. The configuration can be (re) loaded later on, to make small changes. When a stored configuration is loaded all modules will appear as offline. Pressing 'Read' in the Network tab should bring every module online again (if still present).



V. Update

All IZI-Link products firmware can be updated remotely. In “Upgrade” tab the uploaded firmware versions of each product are shown. Follow the steps below to upload the new firmware:

- ▶ Select the appropriate firmware file (*.tsf, *.hex)
- ▶ Select the product type (e.g. IZI-Drive CC2)
- ▶ Press the “Update” button

Note: if an individual product needs to be upgraded please only tick the select square of the product that needs to be updated.

Note 2: When holding the Shift key (on the keyboard) when clicking the select square will select all modules of the same type.

Note 3: When holding Control when clicking the select square of a fixture, all fixtures of the same type will be selected that are connected to the same ‘DMX-interface’.

A green progress bar will appear that indicates the progress of uploading. When the upload is finished all products will show the new version in the ‘App Version’ column.

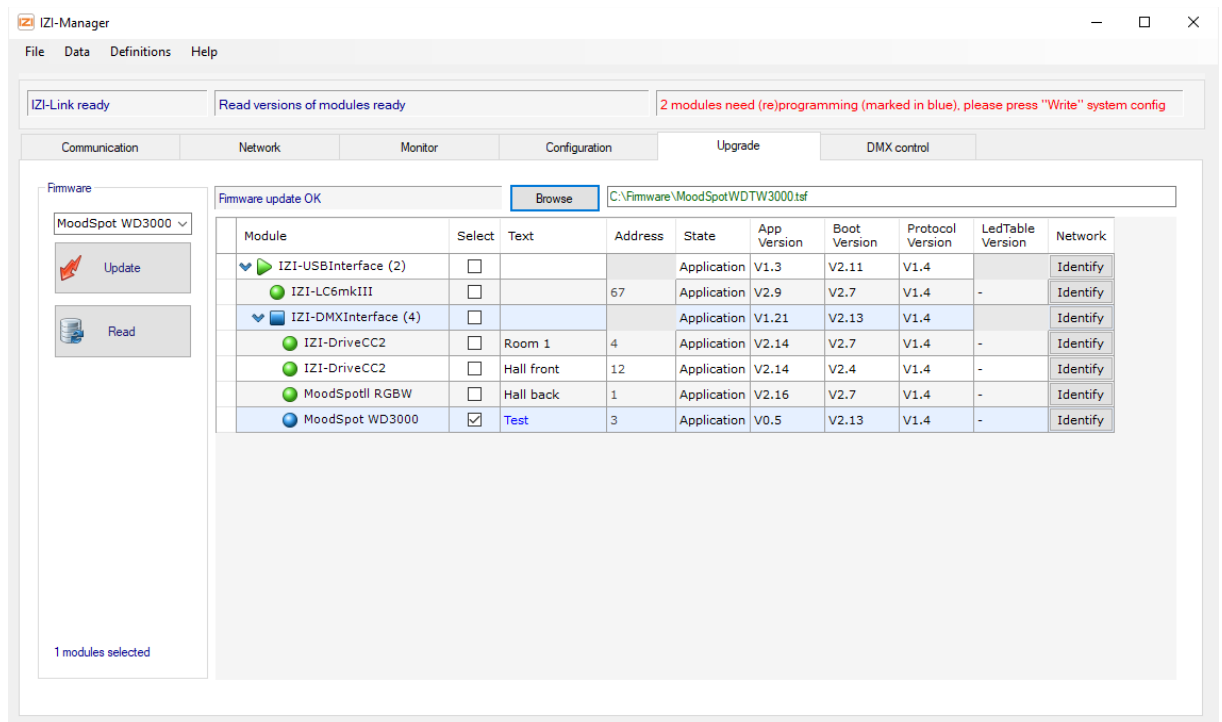


Figure 10 – Upgrading window

VI. Configuration

The configuration tab allows specific configurations to be adjusted for each module. Configurations like Current output and PWM mode can be adjusted here.

Always make sure to check the current settings, never exceed the maximum ratings of the LED.

- ▶ Go to the Configuration tab
- ▶ Select the *Module type* that needs to be adjusted (left bottom)

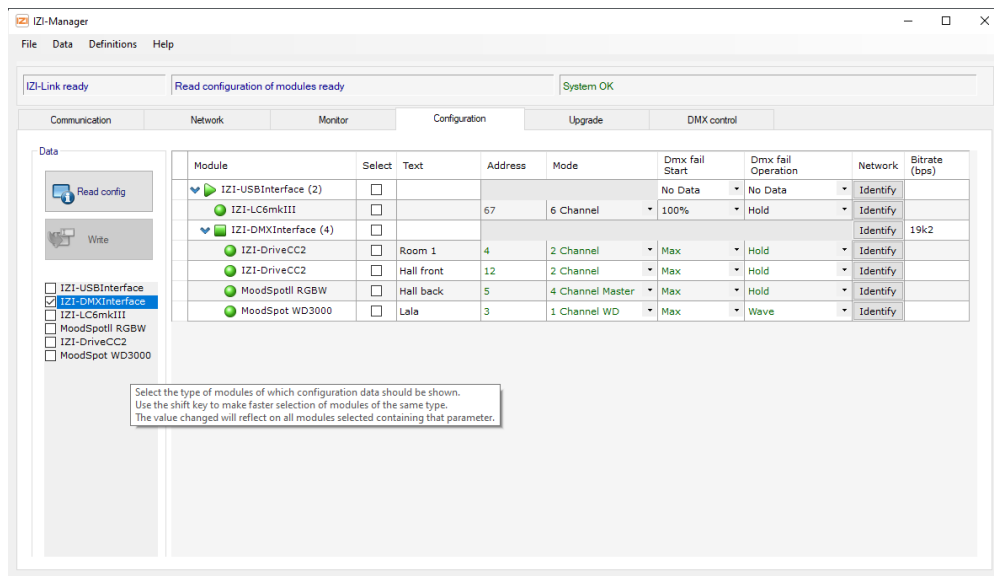


Figure 11 - Configure discovered products

If multiple modules need the same setting, hold the *shift* button and select the square of the type of module that needs to be adjusted. All the following modules of the same type will be selected.

- ▶ Adjust the settings according to your need. The setting of all the selected modules will then change.
- ▶ Press the “Write” button to upload the configuration to the driver

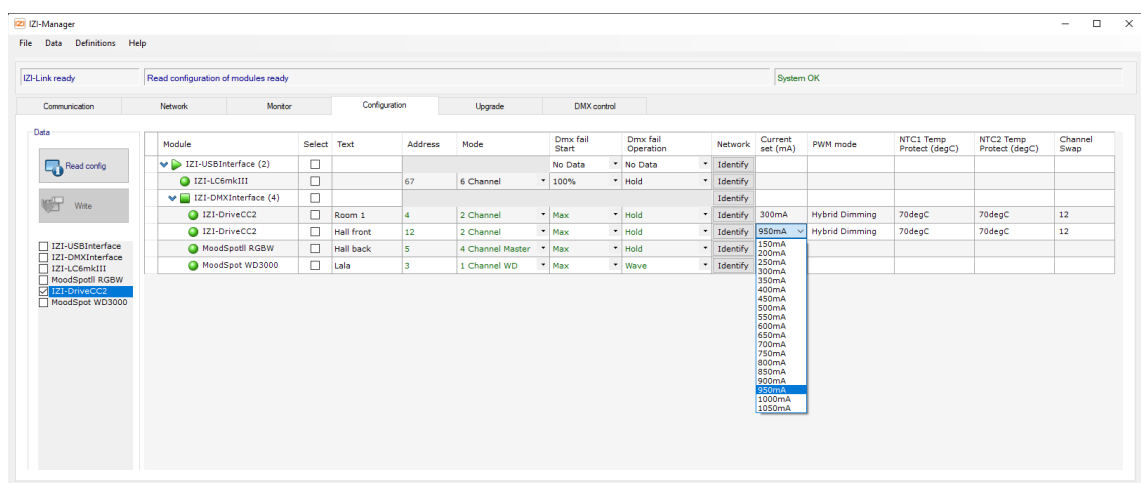
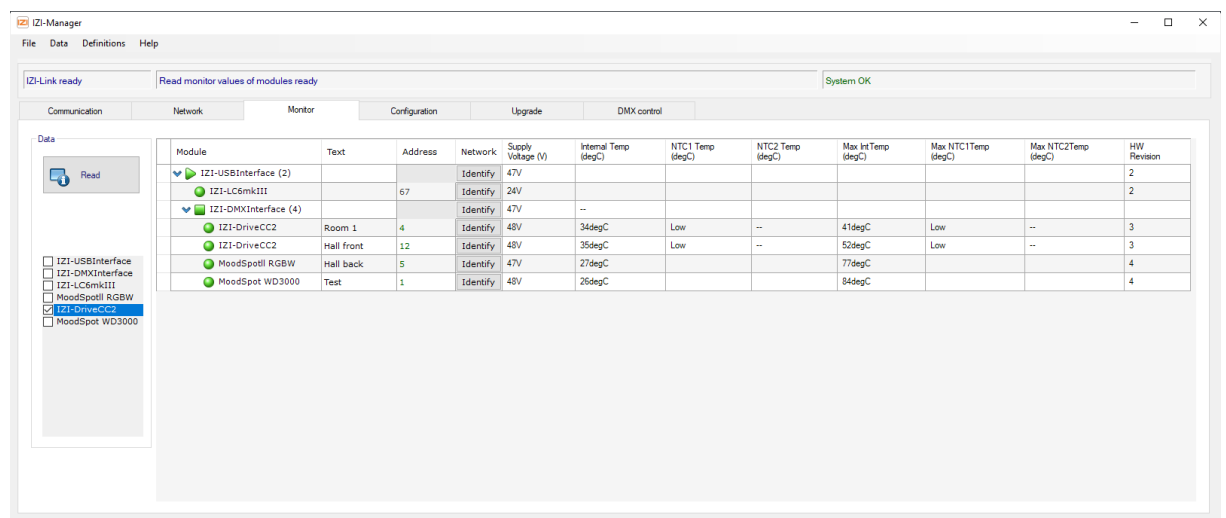


Figure 12 - Configure discovered products options

VII. Monitor

More information about the discovered products are shown in the “Monitor” tab. Information such as temperature, current and voltage can be read from certain products.

- ▶ Go to the Monitor tab
- ▶ Select the *Module type* that needs to be monitored (left bottom)



The screenshot shows the IZI-Manager software interface. The 'Monitor' tab is active, displaying a table of discovered products. The table has the following columns: Module, Text, Address, Network, Supply Voltage (V), Internal Temp (degC), NTC1 Temp (degC), NTC2 Temp (degC), Max IntTemp (degC), Max NTC1Temp (degC), Max NTC2Temp (degC), and HW Revision. The table contains the following data:

Module	Text	Address	Network	Supply Voltage (V)	Internal Temp (degC)	NTC1 Temp (degC)	NTC2 Temp (degC)	Max IntTemp (degC)	Max NTC1Temp (degC)	Max NTC2Temp (degC)	HW Revision
IZI-USBInterface (2)			Identify	47V							2
IZI-LC6mkIII		67	Identify	24V							2
IZI-DMXInterface (4)			Identify	47V	--						
IZI-DriveCC2	Room 1	4	Identify	48V	34degC	Low	--	41degC	Low	--	3
IZI-DriveCC2	Hall front	12	Identify	48V	35degC	Low	--	52degC	Low	--	3
MoodSpotII RGBW	Hall back	5	Identify	47V	27degC			77degC			4
MoodSpot WD3000	Test	1	Identify	48V	26degC			84degC			4

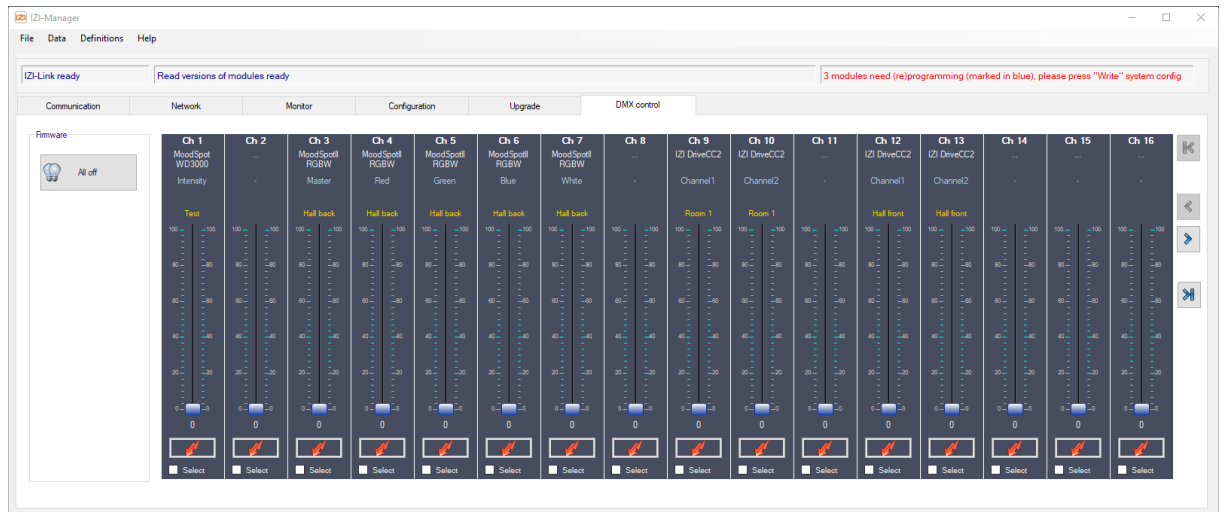
The 'Data' panel on the left shows a 'Read' button and a list of module types with checkboxes:

- IZI-USBInterface
- IZI-DMXInterface
- IZI-LC6mkIII
- MoodSpotII RGBW
- IZI-DriveCC2
- MoodSpot WD3000

Figure 13 - Monitor discovered products

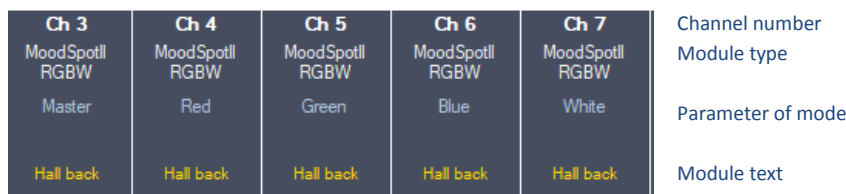
VIII. DMX control

In the 'DMX control' it is possible to test dmx channels while connected to the system. The DMX channels are shown per 16 channels per page (32 pages = 512 channels), you can select the pages with the arrow buttons on the right.



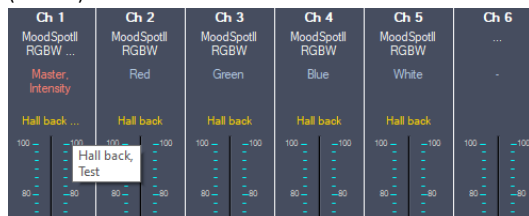
The intensity of the DMX channels can be set with the slider. It also possible to set the intensity for multiple channels at once by first selecting the select checkbox at the bottom of each channel. A selection can be made over multiple pages.

There is a flash button at the bottom of each channel to temporarily set the intensity to 100%.



The upper part of each channel contains information about the module. This is easy to know what parameter of a fixture is set, but can also be used to check if the configuration is as expected.

If channels of fixtures overlap and do not share the same functionality for the selected mode, the parameter will be shown in (salmon) red.



Use the tooltip for extra information about the module type, parameters and module texts of the overlapping fixtures.

IX. Troubleshooting

No COM port is showing up

- 1) Check if the USB cable is plugged in correctly and the green/red LED on the USB connector flashes when plugged in.
- 2) The USB cable needs to install driver software when used for the first time, make sure this has finished.
- 3) Refer to “Appendix I – Finding com port” to see if the driver software have been installed correctly.
- 4) Check if the USB-TO-IZI-Link programmer cable is plugged into the right socket, see Chapter II for reference.

No IZI-Link products are discovered

- 1) Check if the correct COM port is selected
- 2) Check if the IZI-Link DMX Master is powered up
- 3) Check if the USB-TO-IZI-Link programmer cable is plugged into the right socket

The IZI-manager doesn't discover a fixture/driver

- 1) Check if the product is wired appropriately
- 2) Check if:
 - Fixture: lights up when powering the IZI-Link DMX interface
 - Driver: Status LED is lit up
- 3) Check IZI-manager has been updated to the latest version




APPENDIX I - Finding COM port

If you are not sure which COM port is reserved for the USB-to-IZI-Link cable. Please follow these steps to find the COM port:

- ▶ Go to the start menu
- ▶ Go to Control panel
- ▶ Select Device Manager

Under *PORTS (COM & LPT)* you will find a list of available ports. Look for the one that says: USB Serial port (COMx). The x determines the COM port number.

Shortcut key:  + R "devmgmt.msc"

APPENDIX II - Installing COM port driver

The computer should install the COM port driver for the USB-to-IZI-Link driver automatically. When this does not happen automatically, install the drivers manually. The COM port drivers can be found here:

<http://www.ftdichip.com/Drivers/VCP.htm>

Note: Make sure to download the firmware for the right platform.